

A 2,750-Mile Trip, And Then — Shipwreck!

By **DICK BOTHWELL**

Of The Times Staff

Tom D'Eath, one of powerboat racing's top drivers, towed his hydroplane 2,750 miles from Newport Beach, Calif. to St. Petersburg for today's 54th Annual Southland Sweepstakes Regatta — and then a freak accident smashed his 2½-litre "Southern Style" before he got near the water.

Friday morning, D'Eath, in a Datsun pickup truck, was towing his boat on 22nd (Lakeview) Avenue S for test runs at Lake Maggiore when things went sour fast.

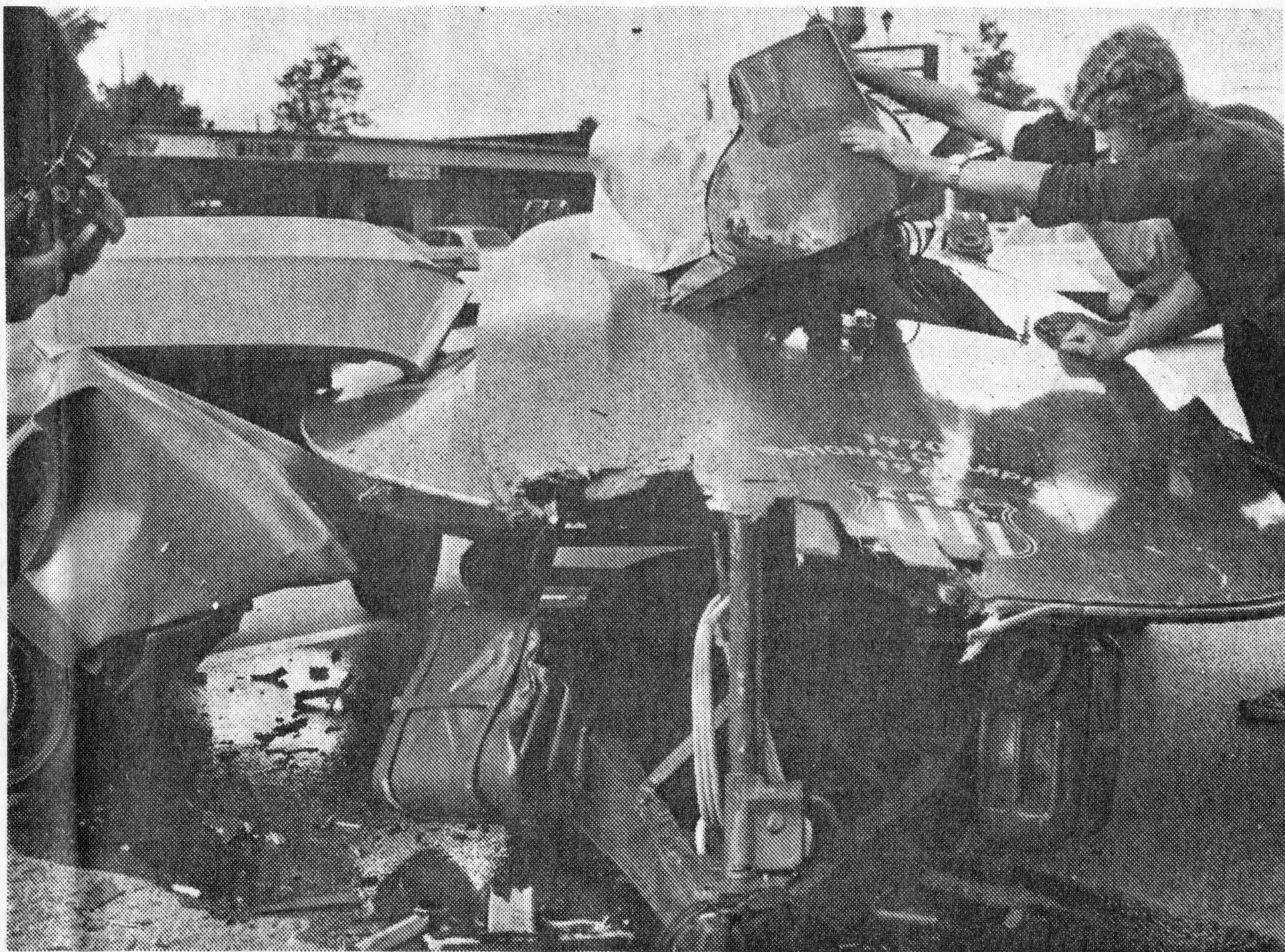
Gulfport police gave this account:

Traveling east on 22nd, D'Eath had started from the traffic light at the 52nd Street intersection when his trailer hitch became disconnected.

The "Southern Style" rolled free and crossed the street into the opposite lane of traffic and hit a 1966 Pontiac traveling west, driven by Philip Ellias, 78, of St. Petersburg.

Police said the Pontiac was destroyed. Ellias was treated at Palms of Pasadena Hospital for minor cuts and released. D'Eath was uninjured. Police said no charges were filed.

(See **HYDROPLANE, 4-B**)



Times Photos by George Burke

... With Result That 'Southern Style' Won't Be In Today's Races At Lake Maggiore



Hydroplane Trailer Disconnected And Rolled Into Path Of 1966 Pontiac . . .